



# AC INDUCTION MOTOR DATA SHEET

Model No. or RFQ No.	Item No.	Rev. No. [ 0 ]
Project Name	Project No.	Quantity set

GENERAL SPECIFICATION		PERFORMANCE DATA	
Frame Size	250M	Rated Output	75 kW 100 HP
Type	HLS	Number of Poles	4
Enclosure(Protection)	Totally Enclosed ( IP55 )	Rotor Type	Squirrel Cage
Method of Cooling	IC411(FC)	Starting Method*	<input checked="" type="checkbox"/> D.O.L
Rated Frequency	50 Hz	Rated Voltage	380 V
Number of Phases	3	Current	Full Load 144.3 A
Insulation Class	<input checked="" type="checkbox"/> F <input type="checkbox"/> B <input type="checkbox"/> H		Locked-rotor**
Temp. Rise at full load (by resistance method) at 1.0 S.F 80 deg. C		Efficiency	
Motor Location	<input checked="" type="checkbox"/> Indoor <input type="checkbox"/> Outdoor	50% Load 92.8 %	
Altitude	Less than 1000 meter	75% Load 94.1 %	
Relative Humidity	Less than 80 %	100% Load 94.0 %	
Ambient Temp.	40 deg. C (Max.)	Power Factor(p.u)	
Duty Type	Continuous ( S1 )	50% Load 0.690	
Service Factor	1.0	75% Load 0.790	
Mounting	<input checked="" type="checkbox"/> B3 <input type="checkbox"/> B5 <input type="checkbox"/> V1 <input type="checkbox"/> B3/B5	100% Load 0.840	
Bearing	Type	Speed at Full Load 1480 r.p.m	
	DE/N-DE	Torque	
	Lubricant	Full Load 49.4 kg·m	
External Thrust	Not applicable	Locked-rotor** 150 %	
Coupling Method	<input checked="" type="checkbox"/> Direct <input type="checkbox"/> V-Belt	Breakdown** 240 %	
Shaft Extension	<input checked="" type="checkbox"/> Single <input type="checkbox"/> Double	Moment of Inertia (J)	
Terminal Box	Main	Load(Max.) 56.350 kg·m <sup>2</sup>	
	Aux.	Motor 1.723 kg·m <sup>2</sup>	
Location	Refer to Outline Drawing	Sound Pressure Level (No-load & mean value at 1m from motor)	
Application		80 dB(A)	
Area classification	Non-Hazardous	Vibration 2.2 mm/sec (r.m.s)	
Type of Ex-Protection	Not applicable	Permissible number of consecutive starts	
Applicable Standard	KS,IEC	Cold 3 times	
		Hot 2 times	
		Paint	Munsell No. 4.4PB5.5/5.6(VL-451)

ACCESSORIES

SUBMITTAL DRAWING	
Outline Dimension Drawing	\ Motor Weight(Approx.)
B3	LM-T1253B3PL001 530 kg
Main T-Box Ass'y	3M-016882

REMARK				
*.High Efficiency(IE2)				

SPARE PARTS

Date	DSND	CHKD	CHKD	APPD
2026-04-14	R.G. KIM	O.J. KIM	J.H. KIM	K.J. KANG

Note: Others not mentioned in this data sheet shall be in accordance with maker standard.  
 Above technical data are only design values and shall be guaranteed with tolerance of applicable standard.  
 Inspection and performance test shall be maker standard, if not mentioned.  
 \* In case of Inverter-Fed Motor, performance data is based on sine wave tests.  
 \*\* Data is based on when the motor is supplied at rated voltage & frequency, and the data is expressed as a percentage of full-load value.



# PERFORMANCE CURVE

CURVE NO.

Type : HLS

75 kW

4 P

50 Hz

Full Load Torque : 49.4 kg.m

Speed : 250M

1480 RPM

Load moment of Inertia (J) : 56.35 kg.m<sup>2</sup>

Rated Voltage

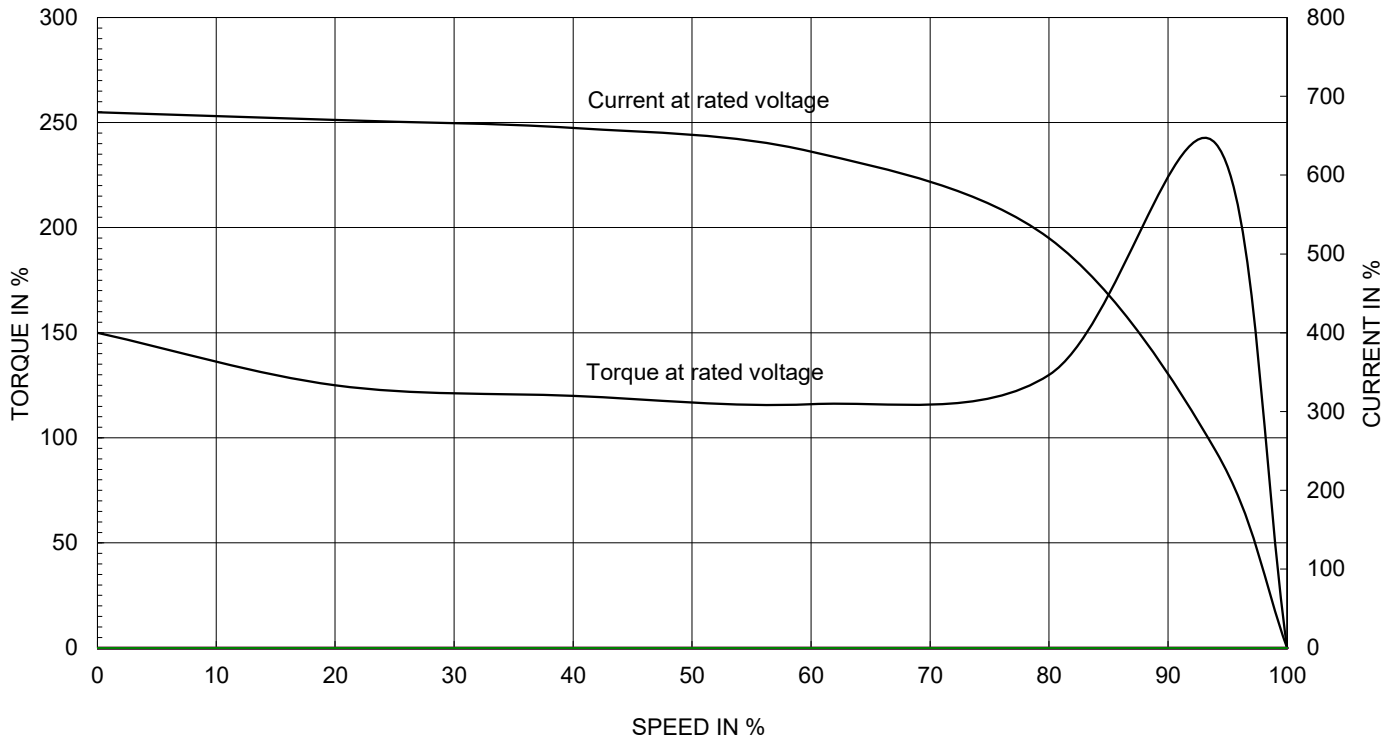
380V

Motor moment of Inertia (J) : 1.723 kg.m<sup>2</sup>

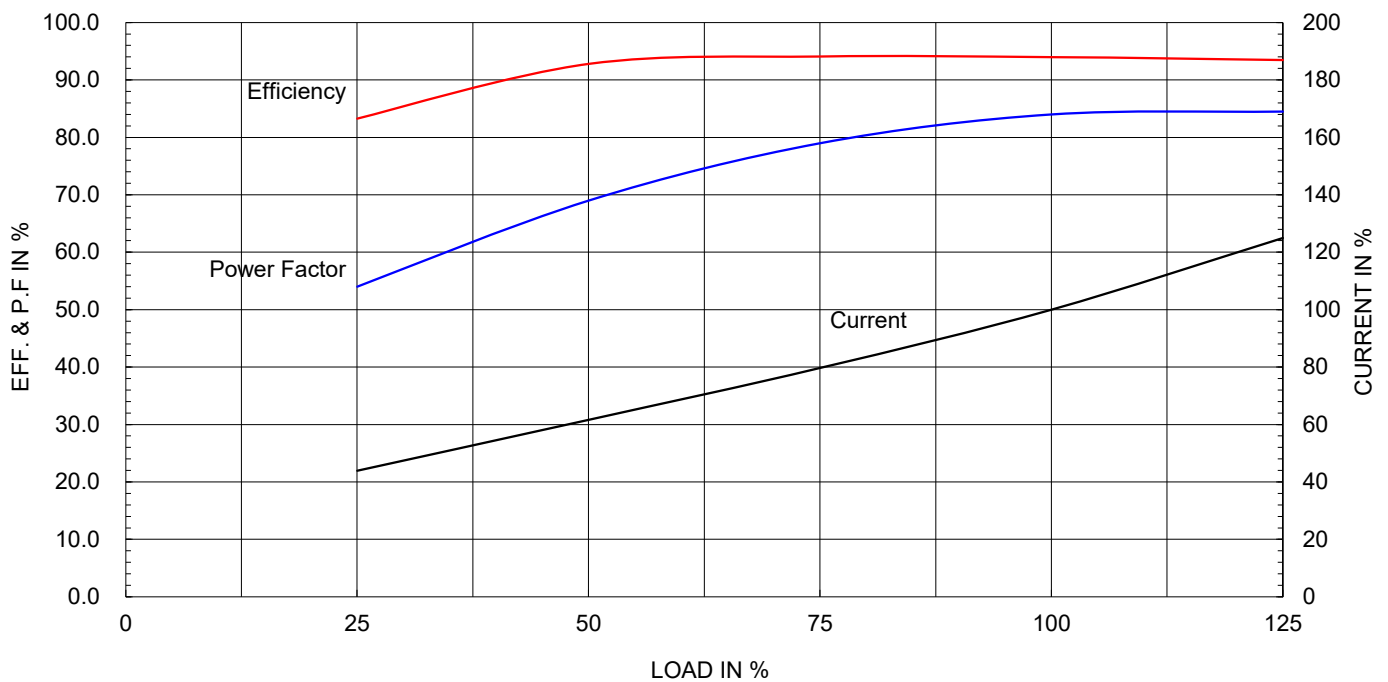
Full Load Current

144.3A

SPEED VS TORQUE & CURRENT CURVE



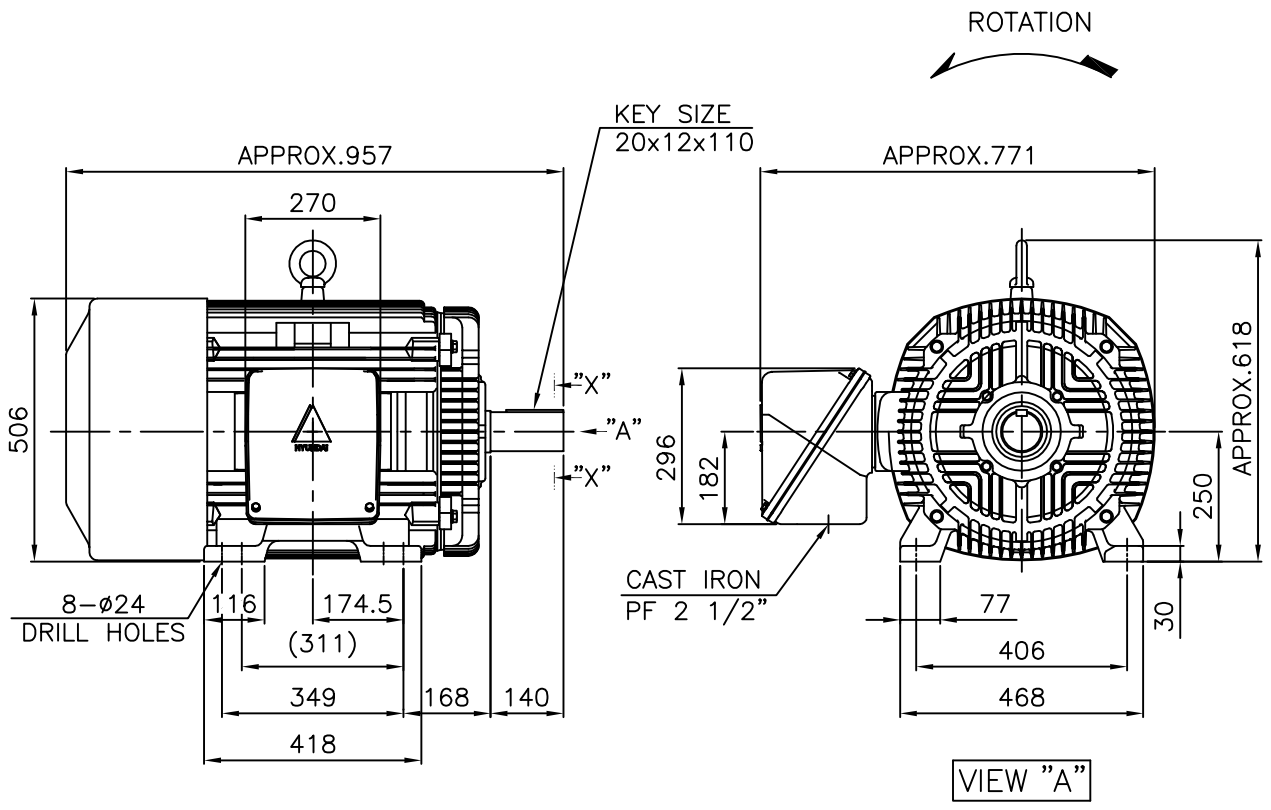
OUTPUT VS EFF., P.F & CURRENT CURVE



본 도면은 현대일렉트릭(주) 재산이므로 허가없이 복사할 수 없음 (취급유의)

THIS DRAWING IS PROPRIETARY TO HYUNDAI ELECTRIC. NO PART OF THIS DRAWING MAYBE REPRODUCED WITHOUT THE PERMISSION OF HYUNDAI ELECTRIC.

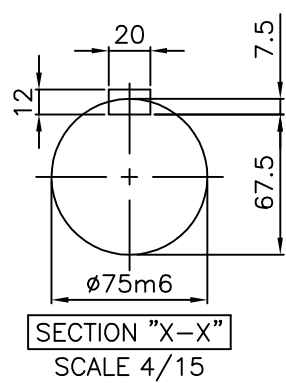
1		2		3		4			
▽	50S	REV	DATE	CONTENTS		REVD BY	CHKD BY	CHKD BY	APPD BY
▽▽	12.5S								
▽▽▽	3.2S								
▽▽▽▽	0.4S								



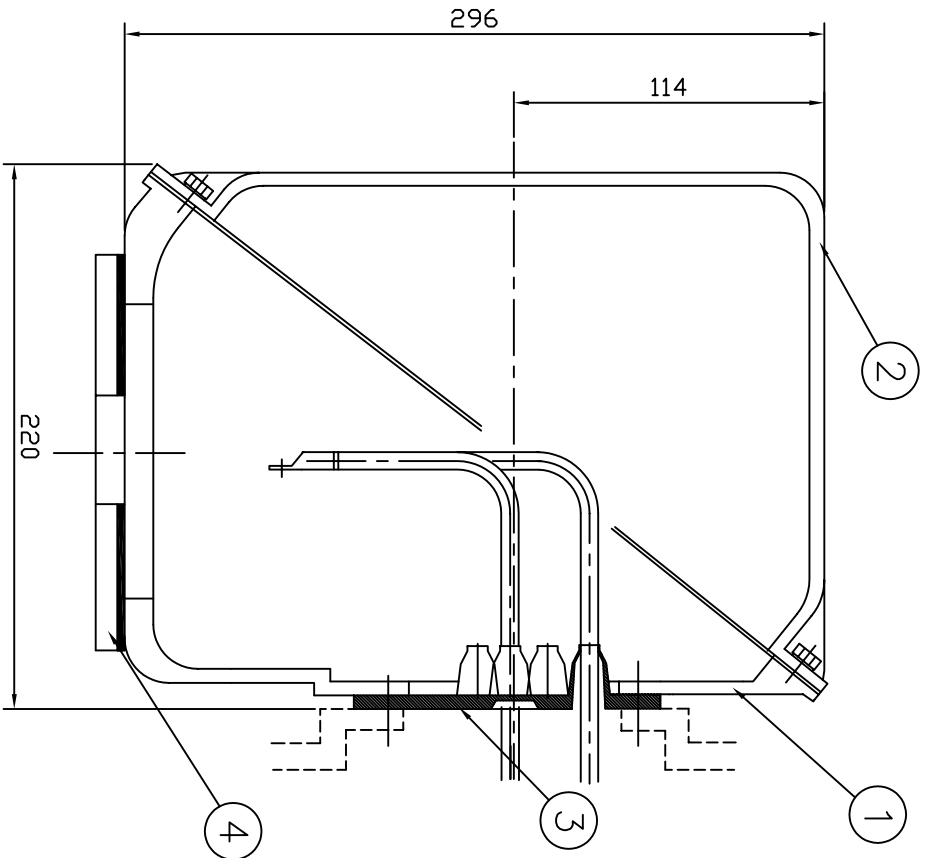
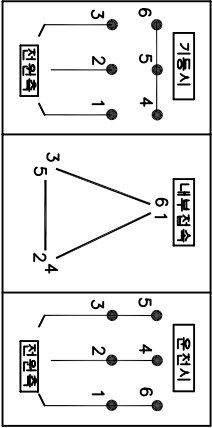
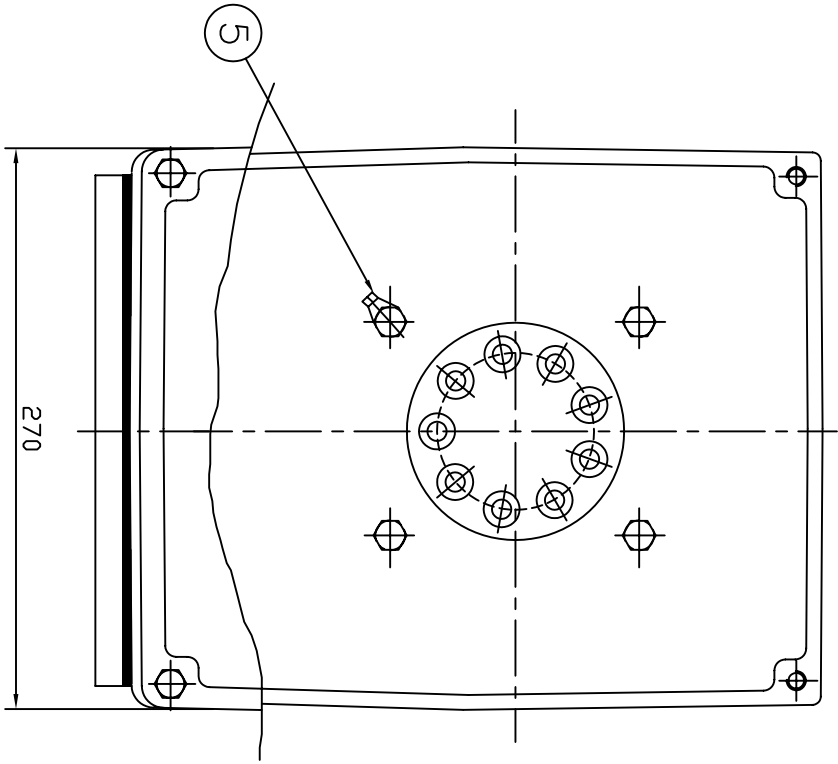
NOTE

1.TOLERANCE :

CENTER HEIGHT	250	$\begin{matrix} 0 \\ -0.5 \end{matrix}$
BASE HOLES	ø24	$\begin{matrix} +0.52 \\ 0 \end{matrix}$
SHAFT DIAMETER	ø75	$\begin{matrix} +0.030 \\ +0.011 \end{matrix}$
KEYWAY WIDTH	20	$\begin{matrix} -0.022 \\ -0.074 \end{matrix}$
KEYWAY DEPTH	7.5	$\begin{matrix} +0.2 \\ 0 \end{matrix}$
KEY WIDTH	20	$\begin{matrix} 0 \\ -0.052 \end{matrix}$
KEY HEIGHT	12	$\begin{matrix} 0 \\ -0.110 \end{matrix}$



APPD BY	S.K.HAN	UNIT	mm	SUBJECT	KS, IEC Fr.250M-4-20P	DWG SIZE	A4 ( 1:15 )
CHKD BY	S.Y.KIM	SCALE	1/15	TITLE	OUTLINE		
CHKD BY	R.G.KIM	PROJEC'N	3각법 (3rd Angle)				
DSND BY	S.H.YUN	DATE	2018-06-22				
				REF. NO		Sheet No.	of
				DWG NO	LM-T1253B3PL001	Revision No.	0



QTY	DESCRIPTION	MATERIAL	DIMENSION	WEIGHT	PART NO.	REMARK	NO.
1	EARTH TERMINAL LUG						5
1	CABLE ENTRY PLATE						4
1	GASKET	NBR					3
1	TERMINAL BOX COVER	CAST IRON					2
1	TERMINAL BOX BODY	CAST IRON					1

APPD BY	김진오	UNIT	MM
Q.P. CHK	주영걸	SCALE	NONE
CHKD BY	권오철	PROJEC'N	3#(3rd Angle)
DSND BY	김현태	DATE	92.06.05

TITLE	TERMINAL BOX ASS'Y
SUBJECT	HLA6 - 250,280F.
REF. NO	3M-016882
DWG NO	3M-016882
REV. NO	1
Sheet No.	of
Revision No.	

REV	DATE	CONTENTS	REVD BY	CHKD BY	Q.P. CHK	APPD BY
1						
2						
3						
4						

APPD BY	김진오	UNIT	MM
Q.P. CHK	주영걸	SCALE	NONE
CHKD BY	권오철	PROJEC'N	3#(3rd Angle)
DSND BY	김현태	DATE	92.06.05

TITLE	TERMINAL BOX ASS'Y
SUBJECT	HLA6 - 250,280F.
REF. NO	3M-016882
DWG NO	3M-016882
REV. NO	1
Sheet No.	of
Revision No.	