

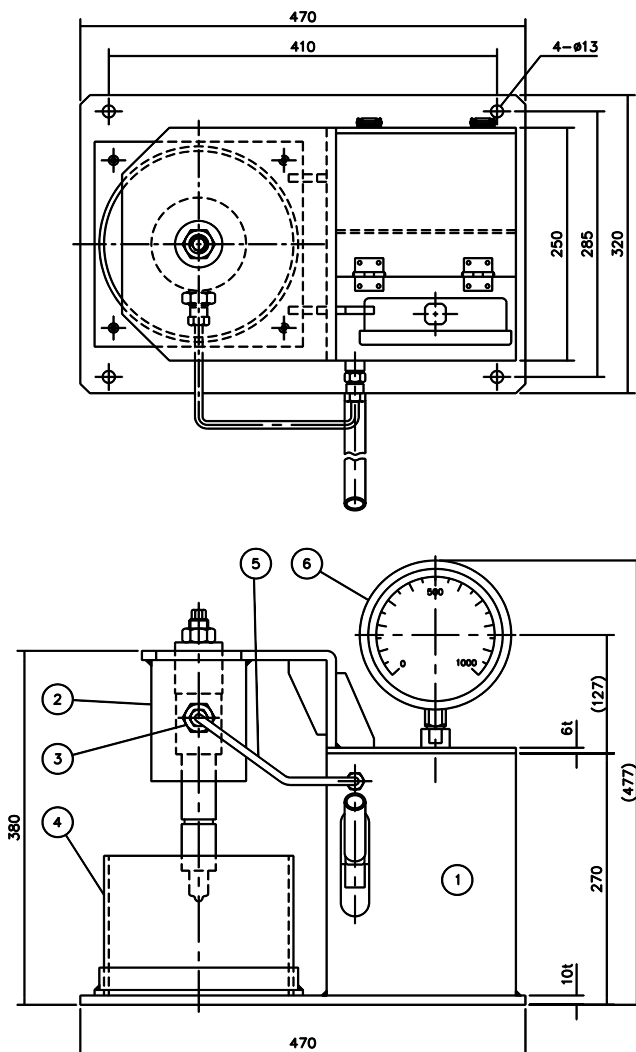


INSTRUCTION MANUAL

NOZZLE TESTER

MODEL : VTU-H003





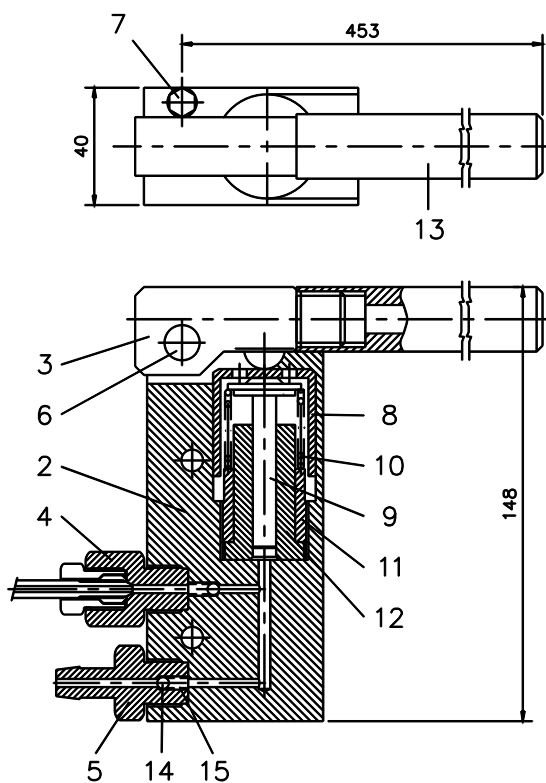
TOTAL WEIGHT OF A VTU-H003 : 33Kg

ITEM 3 : HAND PUMP & CONNECTION PIPING SEE BACK

NO	PART	SPEC.	Q'TY	REMARK
1	NOZZLE TESTER		1	
2	F/V BODY		1	
3	F/V JOINT		1	
4	OIL TANK		1	
5	PIPING		1	
6	PRESSURE GAUGE	∅ 160x1000BAR	1	

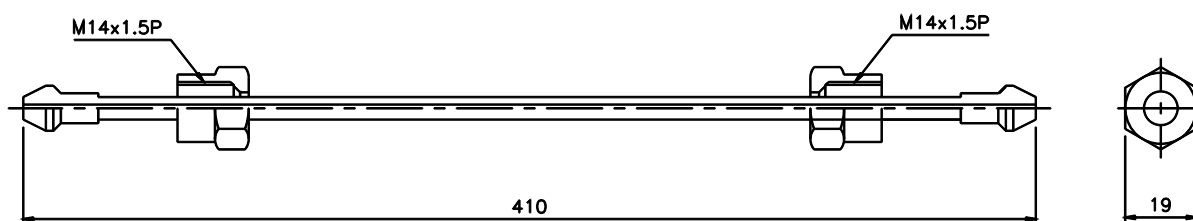


HAND PUMP



NO.	PART	SPEC	Q'TY	REMARK
1	HAND PUMP	600 BAR		
2	PUMP BODY		1	
3	LEVER		1	
4	OUT CHECK V/V	M16x1.5	1	
5	IN CHECK V/V	M16x1.5	1	
6	LEVER PIN		1	
7	PIN BOLT	M5x8L	1	
8	PISTON CAP		1	
9	PISTON	ø10	1	
10	SPRING	ø2.8	1	
11	CYLINDER NUT	M30x1.5	1	
12	CYLINDER	for ø10	1	
13	PUMP LEVER		1	
14	CHECK BALL	ø4	2	
15	CHECK SPRING	ø0.4	2	

CONNECTION PIPING





Operating Instructions

The VTU-H003 units serve for assembling and testing.

Handle units with care to guarantee precision testing. A prerequisite for testing the function of an injection valve is the perfect condition of all its individual components. Pertinent care is assured when the following instructions are observed.

General

A main requirement when handling injection valves is utmost cleanliness at and around the test stand. The use of fibrous and fuzzy material (cotton waste or the like) for cleaning should be avoided. Use clean gasoline instead, or fuel oil, as well as brushes and compressed air.

The spray container on the VTU-H003 units is adjustable and will catch the fuel ejected by an injection valve safely when held in its upper lock, but will release the swivel range of the injection valve fully when held in its lower lock.

Initial Operation

Fill fuel tank with clean fuel (approx. 5 liters). Operate pump by means of hand lever for an extended period at full pump stroke until all the air has been evacuated from the system. Then connect pressure pipe.

Test Oil

Fill fuel tank with fresh diesel fuel from day tank only. The used fuel from the collecting pot of the spray container should be used for other purposes.

Clean dirty filter elements screwed to fuel tank with gasoline. The fuel level in the fuel tank should never drop to the point, at which air might be drawn in by the filters, since this would require the system to be evacuated. An oil level gauge on VTU-H003 units serves for checking the oil level.

Pressure Gauge

The pressure gauge is a highly sensitive measuring instrument. A properly adjusted throttling screw in the pipe connection and elastic inner buffer serve as a protection against damage caused by overloads.



ISO 9001

Inspection

A high-pressure test for the test stand is occasionally required. For this purpose, the connecting nipple is closed by means of the coupling nut and precision steel ball provided. When put under full pressure, the pointer of the pressure gauge should remain in its position. Leaks are shown by the quick dropping of the pressure gauge needle.

Lubrication

Upon removal of the depositing pan, the shaft on units VTU-H003 is greased via the attached grease nipples. In addition, the locking bolts and the sliding bar on the spray container should be lubricated once in a while.
