



Type : HLS

**3.7 kW**
**4 P**
**50 Hz**

Full Load Torque : 2.5 kg.m

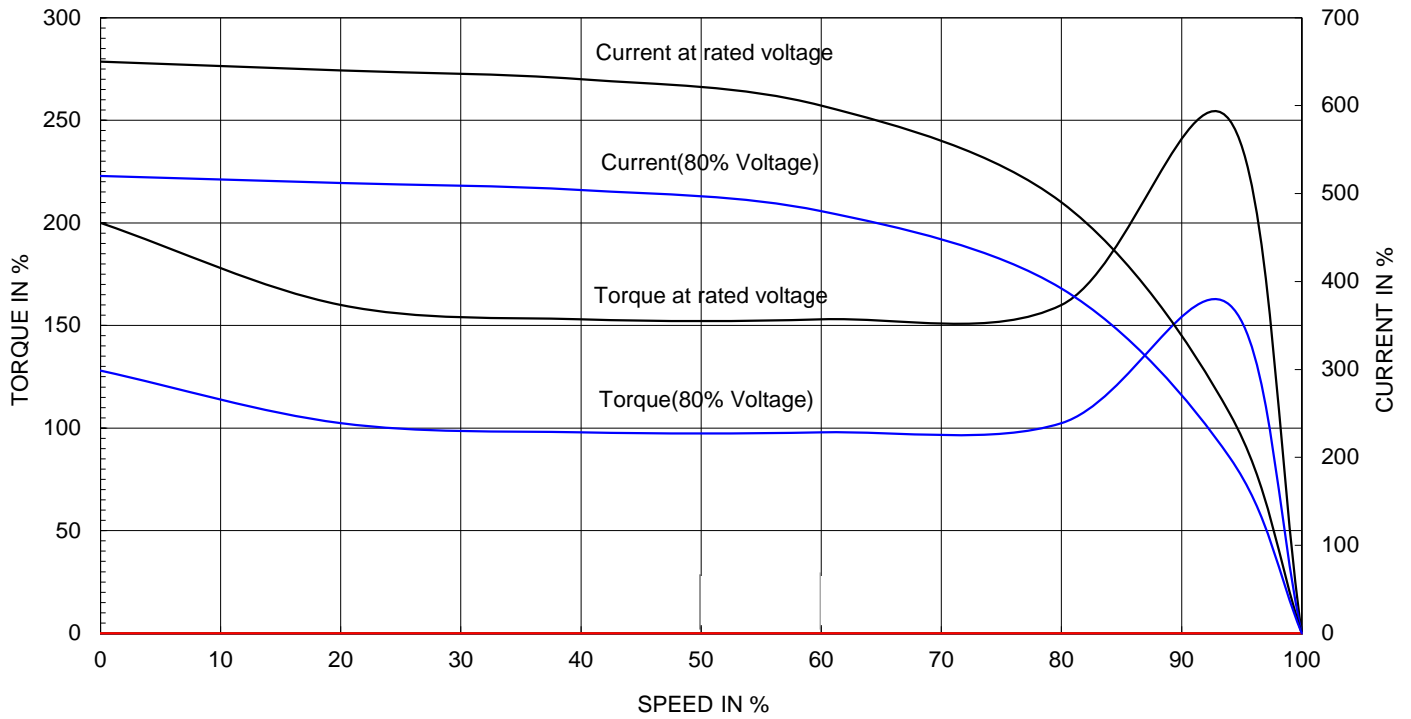
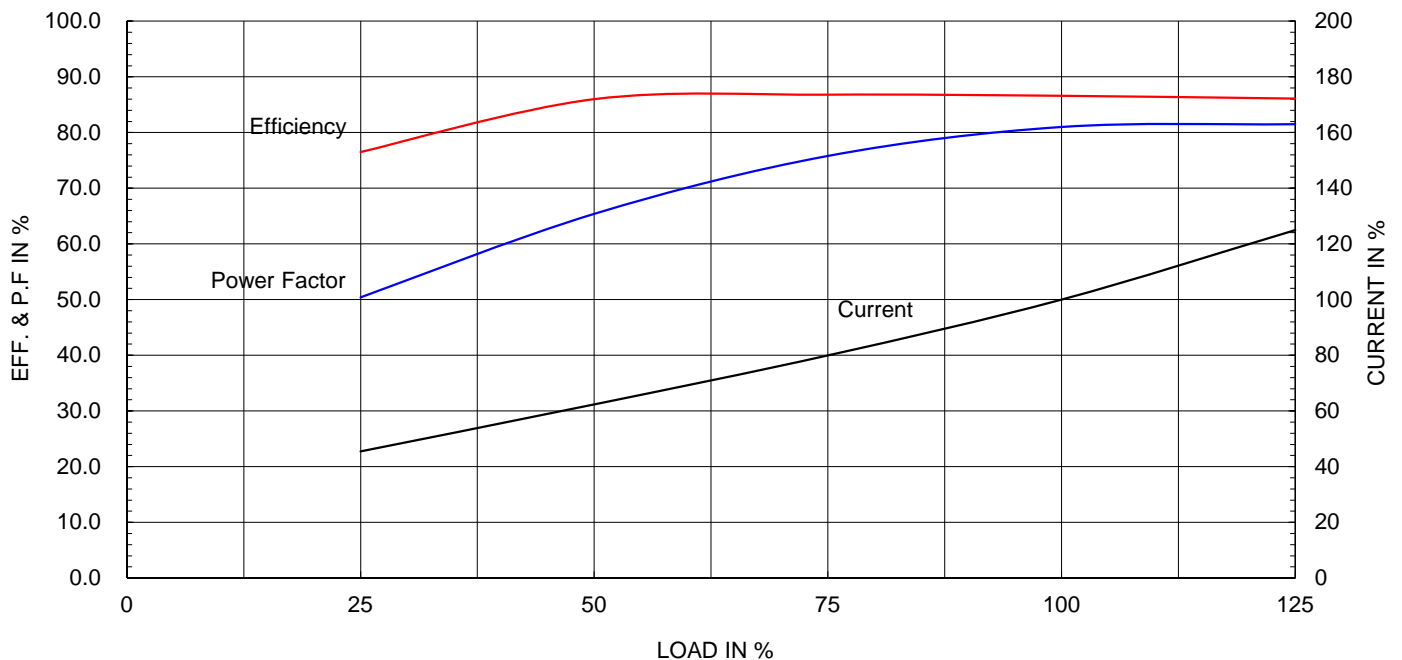
Speed at Full Load : 1445 RPM

 Load moment of Inertia (J) : 3.575 kg.m<sup>2</sup>

Rated Voltage	220V	380V	
---------------	------	------	--

 Motor moment of Inertia (J) : 0.013 kg.m<sup>2</sup>

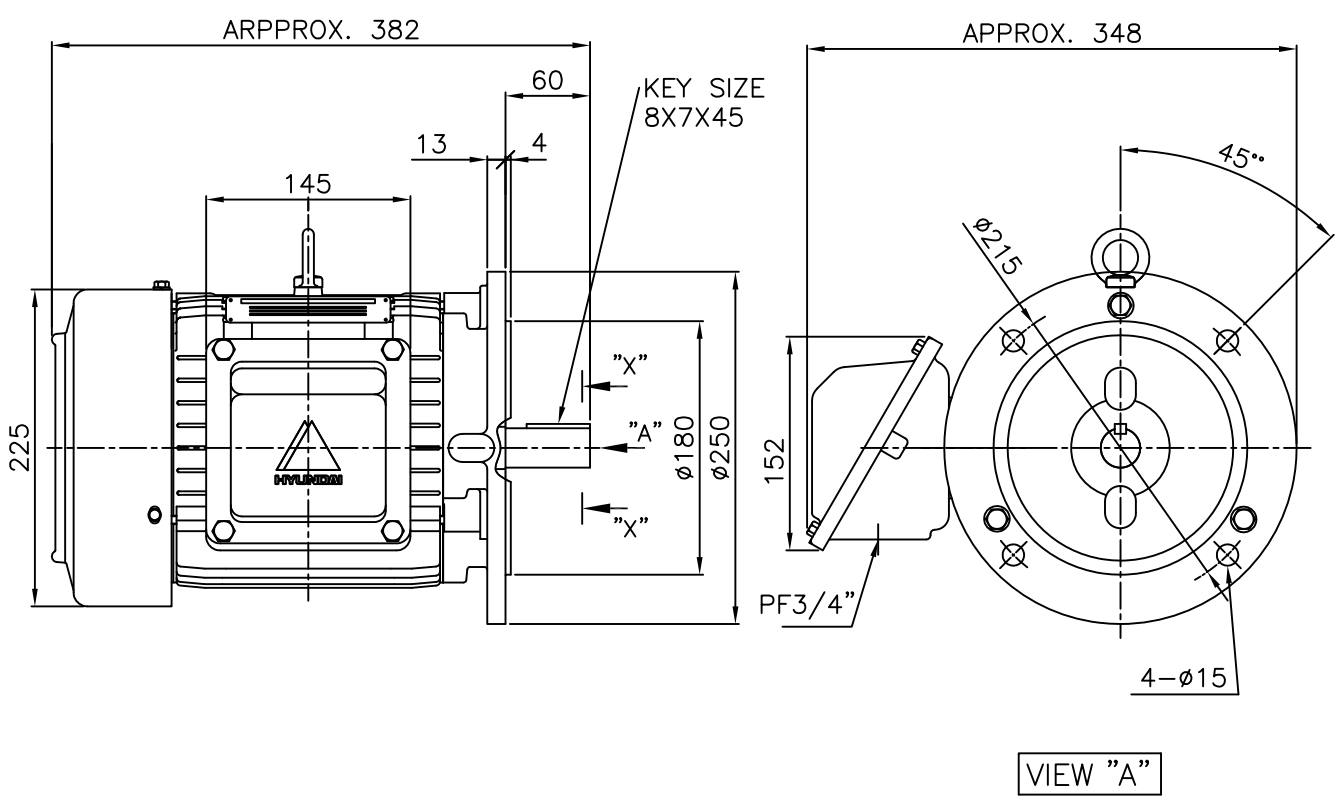
Full Load Current	13.8A	8.0A	
-------------------	-------	------	--

**SPEED VS TORQUE & CURRENT CURVE**

**OUTPUT VS EFF., P.F & CURRENT CURVE**


본 도면은 현대일렉트릭(주) 재산이므로 허가없이 복사할 수 없음 (취급유의)

THIS DRAWING IS PROPRIETARY TO HEES. NO PART OF THIS DRAWING MAYBE REPRODUCED WITHOUT THE PERMISSION OF HEES.

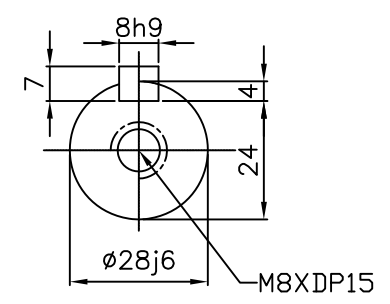
		<h1>TEFC</h1>		<b>TYPE</b>	
<b>THREE PHASE INDUCTION MOTOR</b>		HLS		CAST IRON FRAME	



**NOTE**

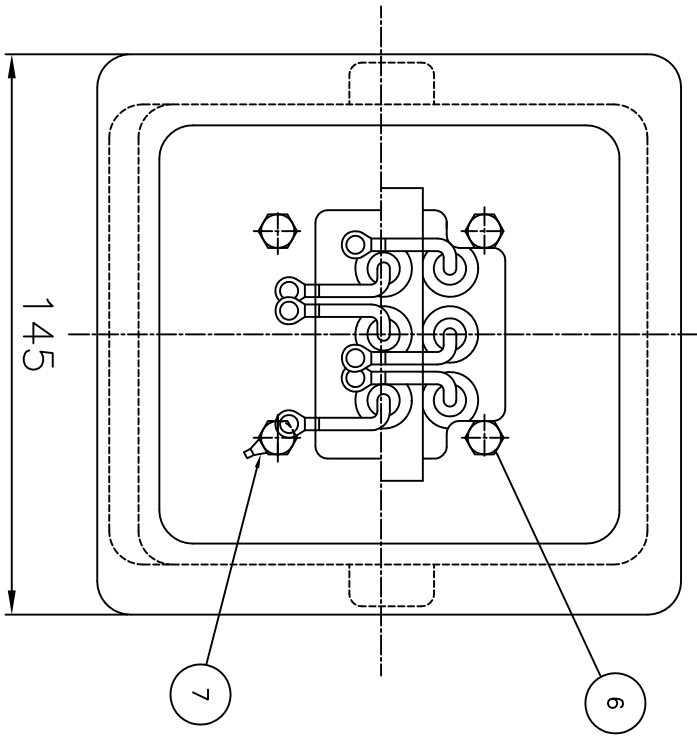
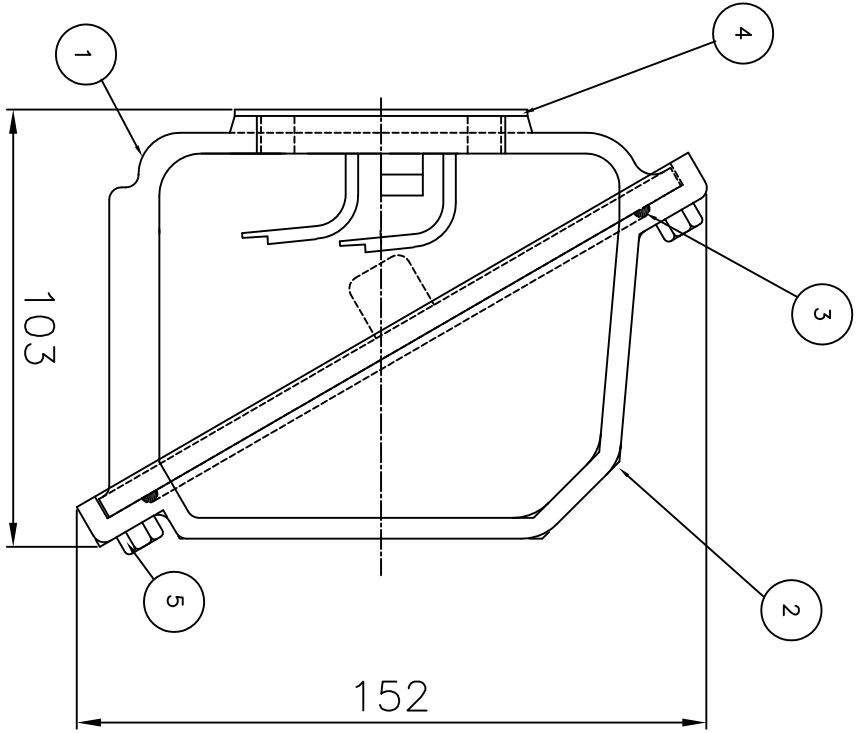
1.TOLERANCE :

FLANGE HOLES	$\phi 15 \begin{smallmatrix} +0.43 \\ -0. \end{smallmatrix}$
RABBET DIAMETER	$\phi 180 \begin{smallmatrix} +0.014 \\ -0.011 \end{smallmatrix}$
SHAFT DIAMERTER	$\phi 28 \begin{smallmatrix} +0.009 \\ -0.004 \end{smallmatrix}$
KEYWAY WIDTH	$8 \begin{smallmatrix} +0 \\ -0.036 \end{smallmatrix}$
KEYWAY DEPTH	$4 \begin{smallmatrix} +0.2 \\ -0 \end{smallmatrix}$



\*CAST IRON CONDUIT BOX

APPD BY	S.K.HAN	UNIT	mm	SUBJECT	IEC 112M	CAD PROJ \ FILE
CHKD BY	S.Y.KIM	SCALE	1/5	TITLE	OUTLINE	
CHKD BY	-	PROJEC'N	3rd Angle			
DSND BY	M.K.HU	DATE	2019.03.06			
				REF. NO		Sheet No. of
				DWG NO	LM-19201046-2	Revision No. 0



REV	DATE	CONTENTS	REV'D BY	CHK'D BY	CHK'D BY	APP'D BY

Q'TY	DESCRIPTION	MATERIAL	DIMENSION	WEIGHT	PART NO.	REMARK	NO.
2	GROUND TERMINAL LUG	CU	10mmSQ	-	-		7
4	BOX+FRAME HEX BOLT	S45C	M6X L20	-	L14AP15020B11		6
4	COVER+BOX HEX BOLT	S45C	M6X L15	-	L14AP15015B11		5
1	BOX GASKET	NBR	-	-	227B1471AG1		4
1	O-RING / COVER	EPDM	φ4	-	249A7130CN1		3
1	CONDUIT BOX COVER	FC150	-	-	159C8413		2
1	CONDUIT BOX	FC150	-	-	159C8412		1

APP'D BY	S.K.HAN	UNIT	MM
CHK'D BY	S.Y.KIM	SCALE	1:1
CHK'D BY	-	PROJEC'N	3rd Angle
DSND BY	M.K.HU	DATE	2019.03.06

REF. NO	227B8004CB2	SHEET NO.	of
DWG NO	TB-19201046-2	Revision No.	0

**HYUNDAI ELECTRIC**

TITLE  
TERMINAL BOX ASSEMBLY

CAD PROJ. \ FILE  
227B8008CB2